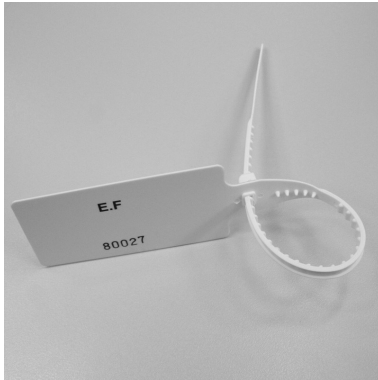
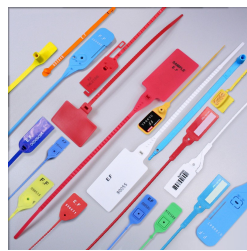


Big Tag SBS

Plastic seals



Material : Polypropylen (PP)

Diameter / Strap width : 7.3 mm

Total length : 465 mm

Usable length : 350 mm

Colours in stock : Rouge et blanc

Pull apart force : 22 kg

Metal insert : No

Closure type : Progressive tightening

Type of tail : Flat and incremented

Tag dimensions : 55 x 103 mm

Standard packaging : 500 pcs box

Delivery time for personalized product : about 14 weeks

MOQ for stock product : 1.000 pcs

MOQ for personalised products : 10.000 pcs

Weight for 1000 pcs : 12 kg

Customs tariff : 39 23 50 90

Available colors :



This polypropylen seal is the SBS twin, but with a bigger identification tag : 50 x 103 mm

The flat progressive stem has a 465 m total length and can be tightened until 350 mm/

It has a 22 kg tensile strength and resists to temperatures from -20 to 80°C.

They are packed in 1000 pcs cartons, in 5 pc mats. (322x377x494 mm - 6kg)

- Customs tariff : 39 23 50 90

- Free samples on request

