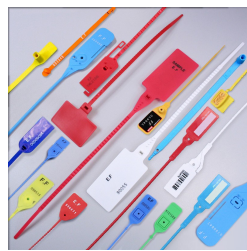


SCS 405

Plastic seals



Material : Polypropylen (PP)

Diameter / Strap width : 6 mm

Total length : 405 mm

Usable length : 350 mm

Metal insert : No

Closure type : Progressive tightening

Tear off : No

Type of tail : Flat and incremented

Tag dimensions : 25 x 60 mm

Ex stock : Yes

Standard packaging : 1.000 pcs box

Delivery time for personalized product : 4 to 6 weeks

MOQ for stock product : 1.000 pcs

MOQ for personalised products : 100 pcs

Weight for 1000 pcs : 4.16

Customs tariff : 39 23 50 90

Pulltight plastic seal with a 25x60 mm identification tag

Standard colours : red, green, yellow, light blue

On request : dark blue, white, orange, purple, pink, brown, grey, black

Free samples on request

