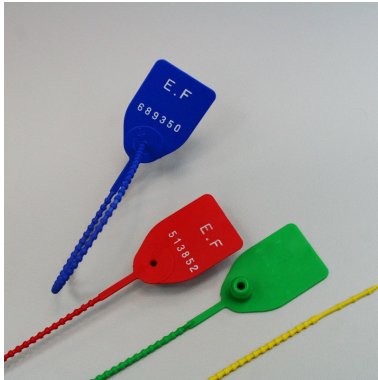
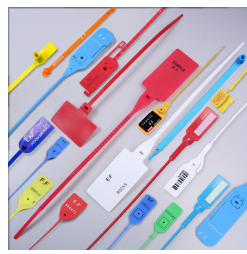


# SP 250

Plastic seals



**Material :** Polypropylen (PP)

**Diameter / Strap width :** 2.5 mm

**Total length :** 250 mm

**Usable length :** 210 mm

**Pull apart force :** 12 kg

**Metal insert :** No

**Closure type :** Progressive tightening

**Tear off :** No

**Type of tail :** Round and incremented

**Tag dimensions :** 28 x 35 mm

**Ex stock :** Yes

**Standard packaging :** 1.000 pcs box

**Delivery time for personalized product :** 3 to 4 weeks

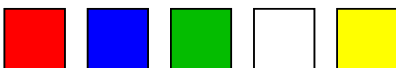
**MOQ for stock product :** 1.000 pcs

**MOQ for personalised products :** 1000 pcs

**Weight for 1000 pcs :** 4 kg

**Customs tariff :** 39 23 50 90

**Available colors :**



#ONGLET:DESCRIPTIF#

**This 251 mm long polypropylen seal is mainly used to close lorries.**

Its tag is 28 x 35 mm. Its 2.5 mm diameter notched tail is 210 mm long.

It resists to 12 kg.

It is available in stock, marked E.F with a consecutive numbering, in red, blue, white, yellow, green.

They can also be personalized with a name from 1000 pcs (2 lines with max 10 characters) in a 4 week leadtime, or with a logo in 6 week leadtime (additional costs on 1st order).

Other colours are available on request : grey, black, orange or purple

*10 pcs mat - 1000 pcs carton*

*Carton : 400 x 300 x 400 mm - 4 kg*

*Customs tariff : 39 23 50 90*

*Free samples on request*

