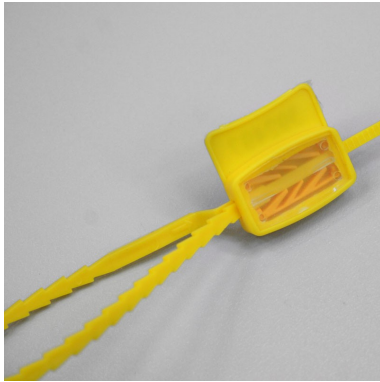
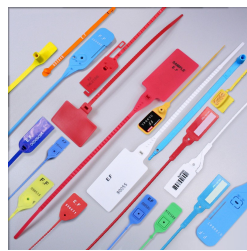


Cobra

Plastic seals



Material : Polypropylen (PP)

Diameter / Strap width : 5 mm

Total length : 270 mm

Usable length : 240 mm

Colours in stock : Yellow

Pull apart force : 20 kg

Metal insert : No

Closure type : Progressive tightening

Tear off : No

Type of tail : Flat and incremented

ISO17712 H : No

Tag dimensions : 10 x 25 mm

Ex stock : Yes

Standard packaging : 1.000 pcs box

Delivery time for personalized product : 10 to 12 weeks

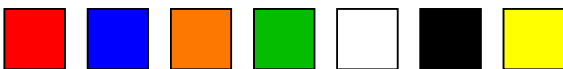
MOQ for stock product : 100 pcs

MOQ for personalised products : 5.000 pcs

Weight for 1000 pcs : 3.8 kg

Customs tariff : 39 23 50 90

Available colors :



#ONGLET:DESCRIPTIF#

This polypropylen seal is used to close bags

It is 5 mm wide, 270 mm long. Its useful length is 240 mm long.

It resists to a 20 kg strength.

Its 10x25mm plastic window lets us see the notched tail and thus check if the seal is correctly closed.

It is available in stock, in yellow, marked F.F and consecutively numbered.

It can also be in white, blue, black, orange, green and red in 10-12 week leadtime, with a 5000 pcs MOQ

10 pcs mat - 1000 pcs carton

Carton : 420 x 294 x 148 mm - 3.8 kg

Customs tariff : 39 23 50 90

Free samples on request

