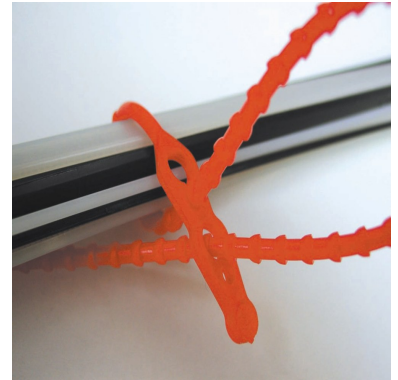
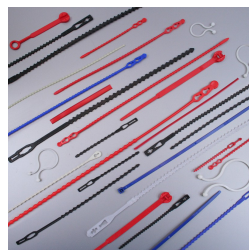


# Universal ties

Releasible ties



**Material** : Polyéthylène type Lupolen 1800H

**Total length** : De 120 à 700 mm

**Closure type** : Progressive tightening

**Type of tail** : Round and incremented

**Ex stock** : Yes

**Standard packaging** : 1.000 pcs box

**MOQ for stock product** : 1.000 pcs

**Customs tariff** : 39 23 50 90

**Delivery Deadline** : 24 à 72h

**Available colors** :



These polyethylen ties can be used several times, up to 700 mm long

They are mainly used in domains such as pharmaceuticals, hospitals, car-industry, food-industry ...

Several lengths are available :

Dimensions	Tensile strength
120 x 3,5 mm	130 N
180 x 3,5 mm	150 N
240 x 3,9 mm	180 N
320 x 4,4 mm	230 N
500 x 5,7 mm	250 N
700 x 6,6 mm	370 N

Frosted ties are conform with norm EU10/2011, regarding food compatibility

Free samples on request

