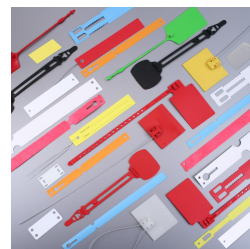


Lock label tag

Identification articles



One-use product : Yes

Material : Moplen PPU

Total length : 180 mm

Usable length : 100 mm

Pull apart force : 15 kg

Closure type : Fixed-length

Tag dimensions : 30 x 35 mm

Ex stock : Yes

Standard packaging : 2.000 pcs carton in bulk

Delivery time for personalized product : 3 to 4 weeks

MOQ for stock product : 2.000 pcs

MOQ for personalised products : 1000 pcs

Weight for 1000 pcs : 2.3 kg

Customs tariff : 39 23 90 90

Possible Marking : Yes

Delivery Deadline : 24 à 72h

Available colors :



Lock label-tag is ideal to identify luggage

The tag can be personalised with an adhesive label, pen-writing, a laser or hotfoil marking.

Conditionning : 2000 pcs carton

Carton dimensions : 390 x 250 x 590 mm

Free samples on request

